
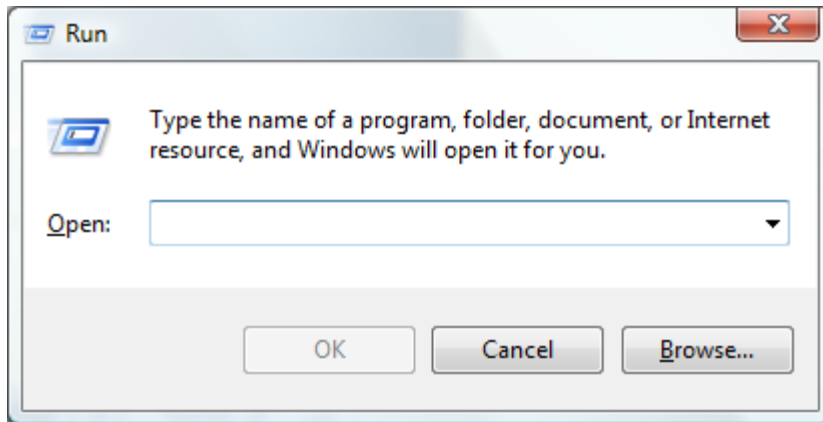


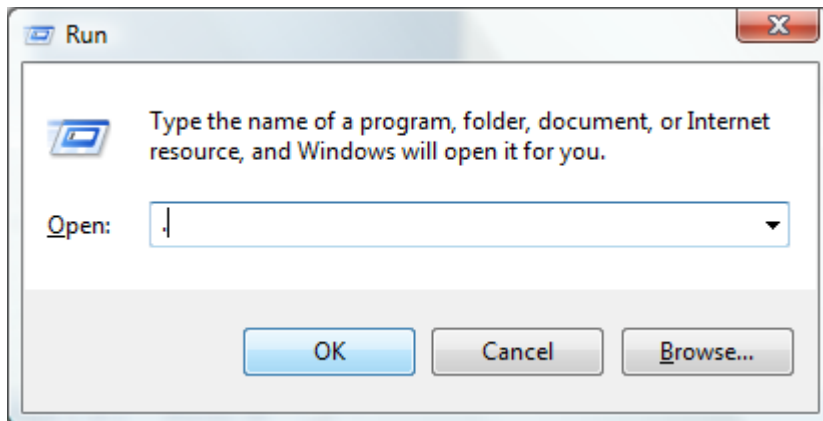
How To Clear Your SOClass Cache

These steps need only be taken if experiencing problems launching, logging in, or performing functions within the ASYCUDA World application.

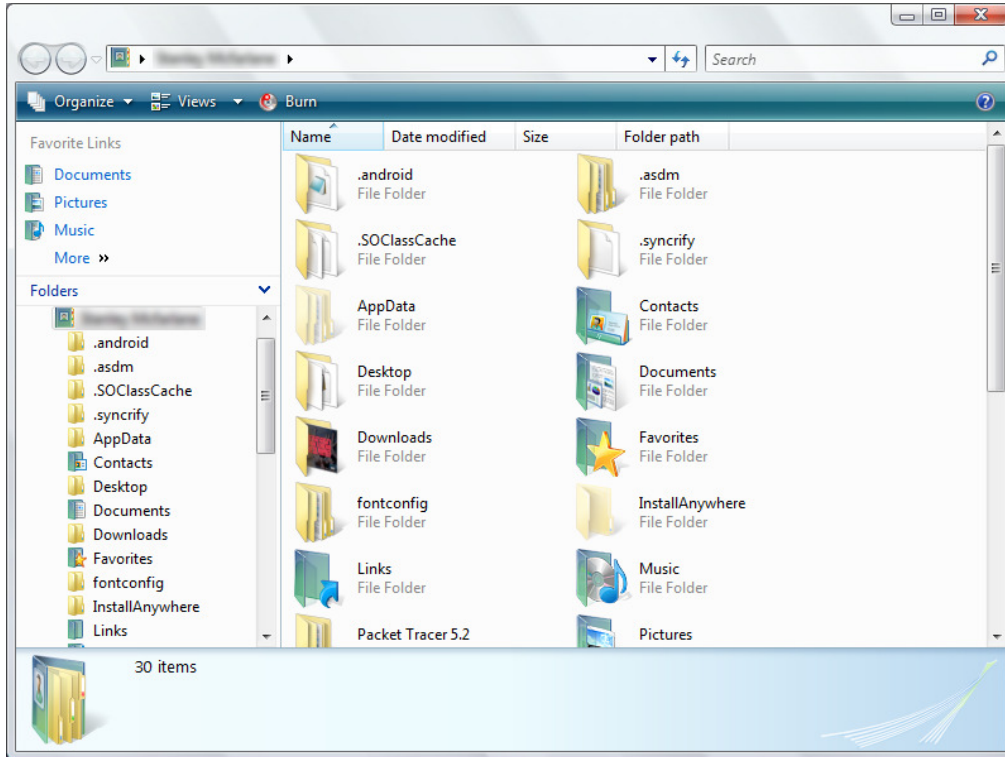
1. On your keyboard, hold the  key and press the 'R' key. This will open a window similar to the one shown below



2. In this dialog, enter a single full-stop in the field labelled 'Open', and click 'OK'



3. This will open an Explorer window similar to the one shown below



4. In this window, right-click on the folder titled '.SOClassCache' and select 'Delete'

